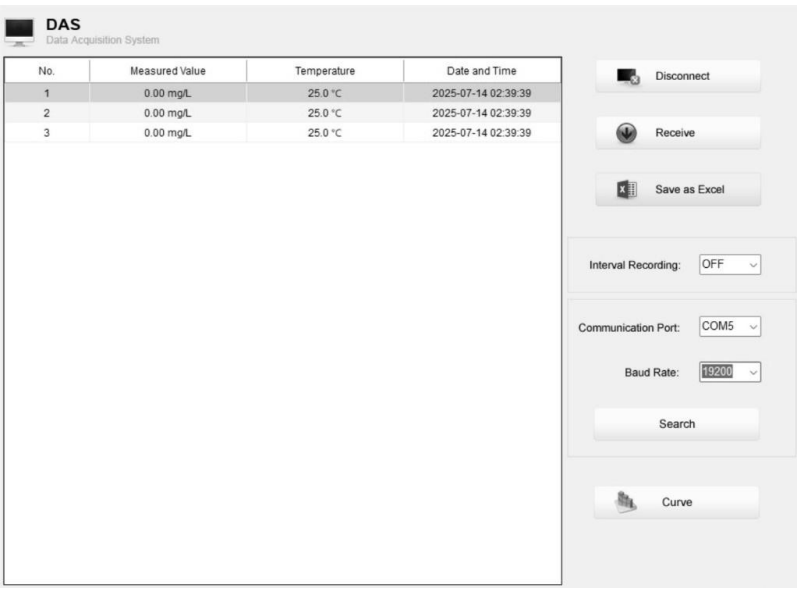


This DAS software is designed for transferring data, receiving measurement values and importing data into Excel. It runs on Windows 10



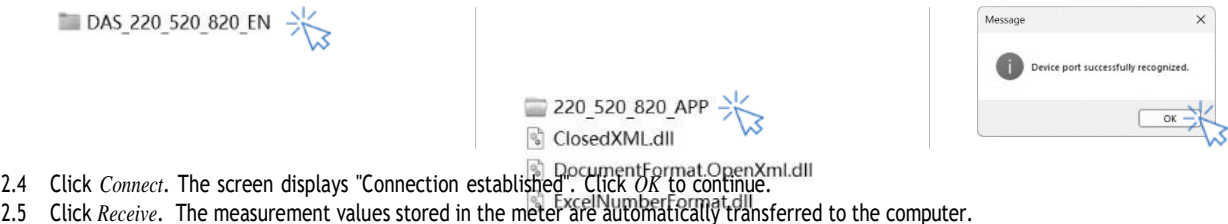
Installing the Driver

- 1.1 Connect the blue USB connector to the computer and the black connector to the meter.
- 1.2 Double-click **PL2303_DriverInstaller.exe** and follow the on-screen instructions to complete the installation.

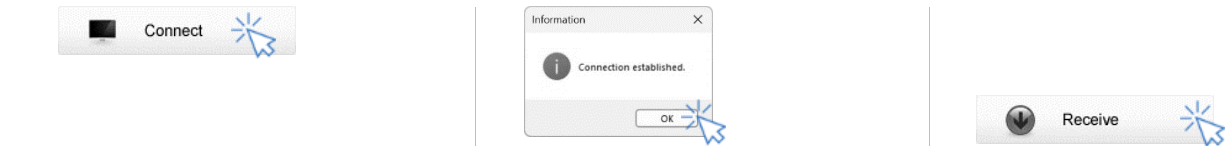


Receiving Data

- 2.1 Open the **DAS_220_520_820_EN** folder.
- 2.2 Double-click **220_520_820_APP**. The system scans for an available port and displays "Device port successfully recognized."
- 2.3 Click **OK** to start the application.



- 2.4 Click **Connect**. The screen displays "Connection established". Click **OK** to continue.
- 2.5 Click **Receive**. The measurement values stored in the meter are automatically transferred to the computer.

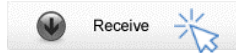
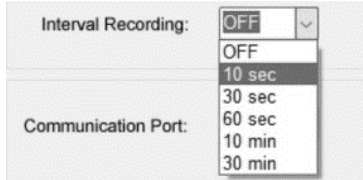


Note: The 'Date and Time' column in the table shows the timestamp of data transmission.

Interval Recording

This function helps the user to record measurement values at regular intervals over a specified time period. The recording interval can be set to 10/30/60 seconds, 10/30 minutes, or turned off.

- 3.1 Click the Interval Recording dropdown and select a parameter.
- 3.2 Click *Receive* to begin automatically transferring the measured values to the data sheet.

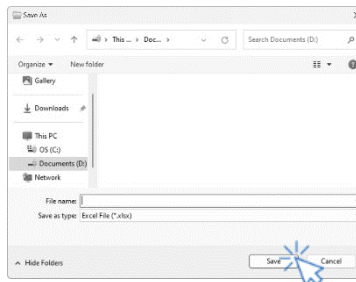
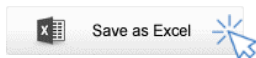


- The first data point takes approximately 1 minute to appear on the screen.
- Do not press any key on the meter during Interval Recording mode, as this may interrupt communication.

Creating the Excel File

This function saves all received measurement values to a specified Excel file, allowing user to easily edit, analyze, or print the data.

- 4.1 Click *Save as Excel* to open the Save As dialog.
- 4.2 Enter a file name, then click *Save*.



WARNING

Once the software is closed, all received measurement values will be lost and cannot be recovered.

Curve View

This function allows the user to continuously view variations in the measurement.

- 5.1 Click *Curve* to display the curve graph immediately.
- 5.2 To exit the current mode, click *Back*.

